

ACCL / ACOEL 2018 Joint Program

Weathering the Storm: Resilience & Sustainability
in Design and Construction

Panel 3—Powering Resilience: Keeping the Lights On

**BRASFIELD
& GORRIE**
GENERAL CONTRACTORS



Firm Overview



STATES

- CURRENT WORK
- PERFORMED WORK

OFFICES

- ATLANTA
- BIRMINGHAM**
- CHARLOTTE
- COLUMBUS
- DALLAS
- GREENVILLE
- HUNTSVILLE
- JACKSON
- JACKSONVILLE
- NASHVILLE
- ORLANDO
- RALEIGH



Firm Overview

Brasfield & Gorrie Fast Facts



1964

EST.

54 YEARS IN BUSINESS



\$3.5 billion

IN PROJECTED REVENUE



12

OFFICES



14

MARKET SECTORS



2,800+

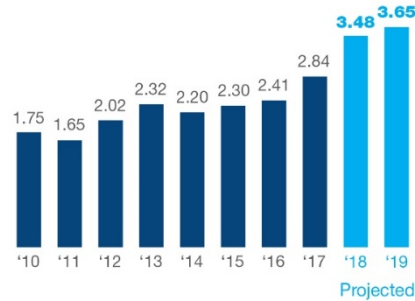
EMPLOYEES



175+

ACTIVE JOBSITES

Gross Revenue
In Billions



Engineering News-Record



#30

TOP 400 CONTRACTORS



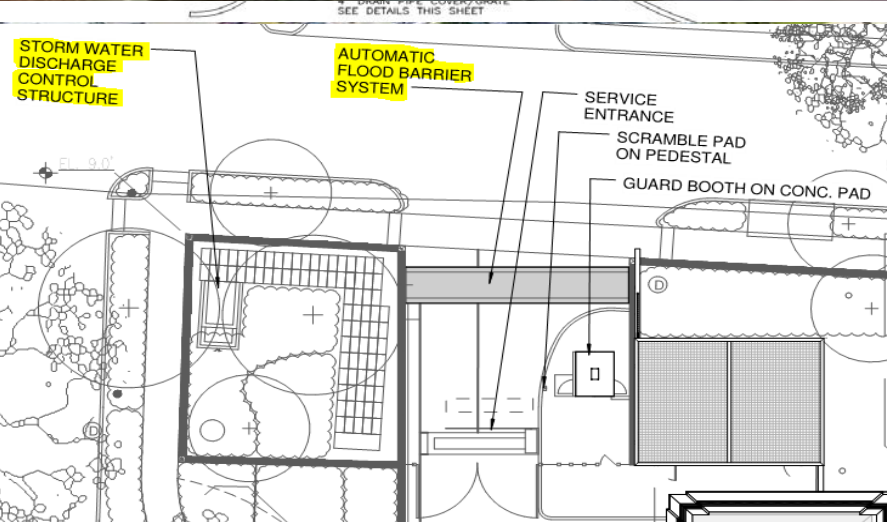


Powering Resilience: Keeping the Lights On



- ▶ **general weather**
- ▶ flood / tidal
- ▶ wind
- ▶ seismic
- ▶ emp
- ▶ security
 - focused
 - terror
 - infrastructure
 - technology

Powering Resilience: Keeping the Lights On



- ▶ general weather
- ▶ **flood / tidal**
- ▶ wind
- ▶ seismic
- ▶ emp
- ▶ security
 - focused
 - terror
 - infrastructure
 - technology

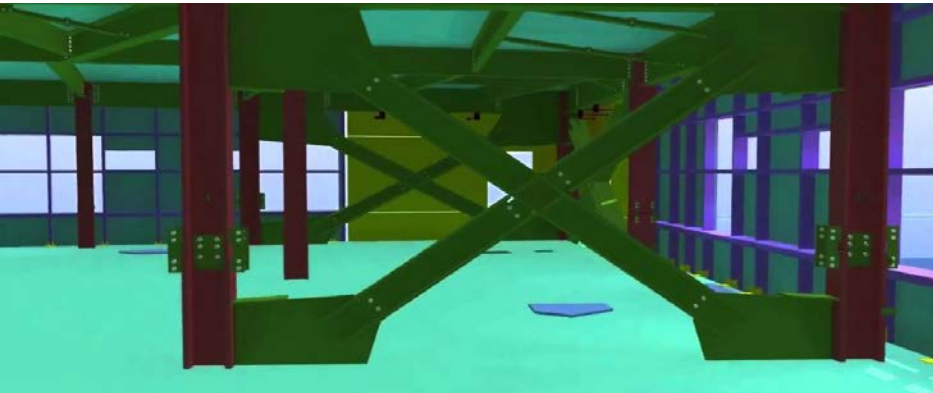
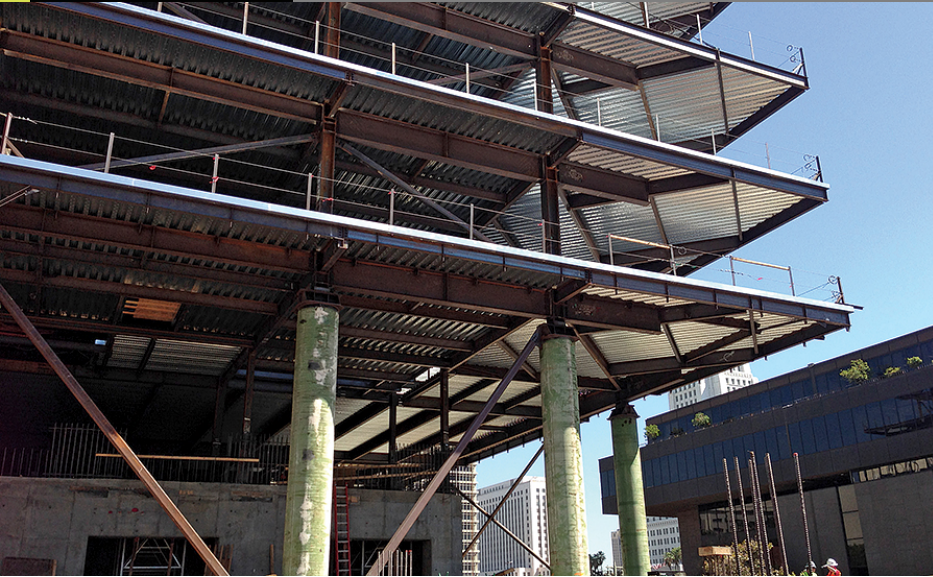
Powering Resilience: Keeping the Lights On



- ▶ general weather
- ▶ flood / tidal
- ▶ **wind**
- ▶ seismic
- ▶ emp
- ▶ security
 - focused
 - terror
 - infrastructure
 - technology



Powering Resilience: Keeping the Lights On



- ▶ general weather
- ▶ flood / tidal
- ▶ wind
- ▶ **seismic**
- ▶ emp
- ▶ security
 - focused
 - terror
 - infrastructure
 - technology

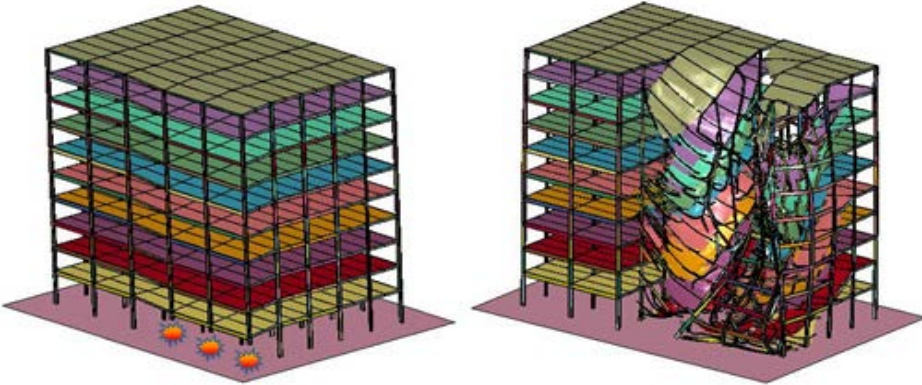


Powering Resilience: Keeping the Lights On

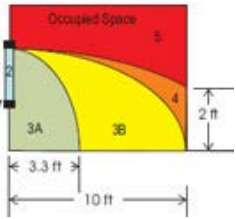


- ▶ general weather
- ▶ flood / tidal
- ▶ wind
- ▶ seismic
- ▶ **emp**
- ▶ security
 - focused
 - terror
 - infrastructure
 - technology

Powering Resilience: Keeping the Lights On



- ▶ general weather
- ▶ flood / tidal
- ▶ wind
- ▶ seismic
- ▶ emp
- ▶ **security**
 - focused
 - terror
 - infrastructure
 - technology

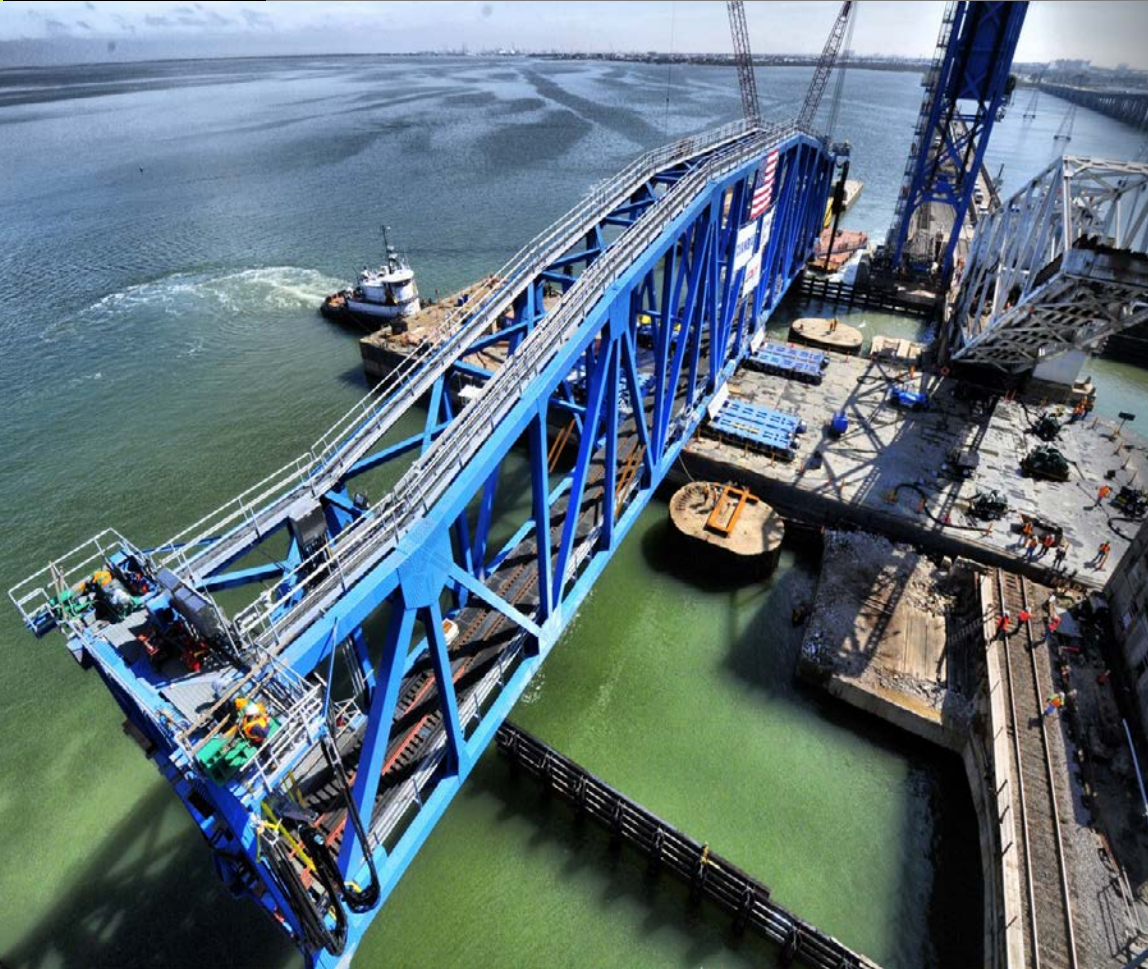


Performance Condition	Protection Level	Hazard Level	Description of Window Glazing Response
1	Safe	None	Glazing does not break. No visible damage to glazing or frame
2	Very high	None	Glazing cracks but is retained by the frame. Dusting or very small fragments near sill or on floor acceptable.
3A	High	Very Low	Glazing cracks fragments enter space and land on floor no further than 3.3 ft. from window.
3B	High	Low	Glazing cracks fragments enter space and land on floor no further than 10 ft. from window.
4	Medium	Medium	Glazing cracks fragments enter space, land on floor and impact a vertical witness panel at a distance of no more than 10 ft. from the window at a height no greater than 2 ft. above the floor.
5	Low	High	Glazing cracks and window system fails catastrophically. Fragments enter space impacting a vertical witness panel at a distance of no more than 10 ft. from the window.





Infrastructure



- ▶ Aviation
- ▶ Marine
- ▶ Rail
- ▶ Roads & Bridges
- ▶ Networks

- ▶ The need to last more than 100 years !

Brownfield sites

- ▶ Increasing environmental contamination and liability issues
- ▶ Developing resilient, sustainable sites

Example:
Transforming the General
Motors Production plant into
The Assembly Yards –
Atlanta, GA





Skilled labor



The greatest challenge ... to keeping the lights on ...

Thank you

Questions & Answers

**BRASFIELD
& GORRIE**
GENERAL CONTRACTORS

